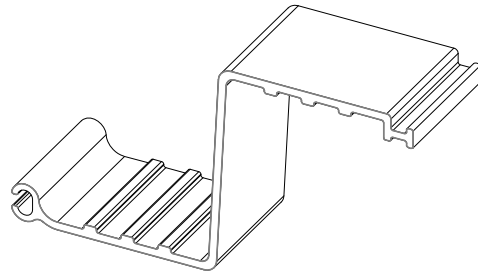


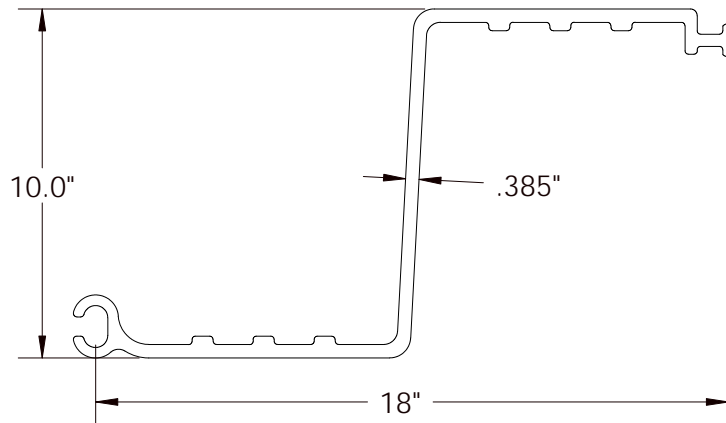


SG-650



Drawn: JAB Date: 01/12/10

Allowable Moment (M)	7,893 ft-lb/ft	35.11 kN-m/m
Section Modulus (Z)	29.6 in ³ /ft	1,591 cm ³ /m
Moment of Inertia (I)	148 in ⁴ /ft	20,212 cm ⁴ /m
Impact Strength	15,000 in-lbs/in ²	2,625 N-mm/mm ²
Thickness (t)	0.385 in	9.8 mm
Section Depth	10.0 in	254 mm
Section Width	18 in	457 mm
Material	Weatherable Rigid Vinyl	
Standard Colors	Grey, Clay	
Profile/Patented Features	Z Profile, I-Beam Lock	
Standard Packaging	12 sheets/bundle	



Physical properties are defined by ASTM testing standards, The Aluminum Association Design Manual, and/or standard engineering practice. The values shown are nominal and may vary. The information found in this document is believed to be true and accurate. No warranties of any kind are made as to the suitability of any CMI product for particular applications or the results obtained there from. ShoreGuard, C-Loc, TimberGuard, GeoGuard, Dura Dock, Shore-All, and Gator Gates are registered trademarks of Crane Materials International. ArmorWare, Ultra Composite, GatorDocks, GatorBridge and CMI Waterfront Solutions are trademarks of Crane Materials International. United States and International Patent numbers 5,145,287; 6,000,883; 6,033,155; 6,053,666; D420,154; 6,575,667; 7,059,807; 7,056,066; 7,025,539; 7,393,482; Other patents pending. © 2010 Crane Materials International. All Rights Reserved.